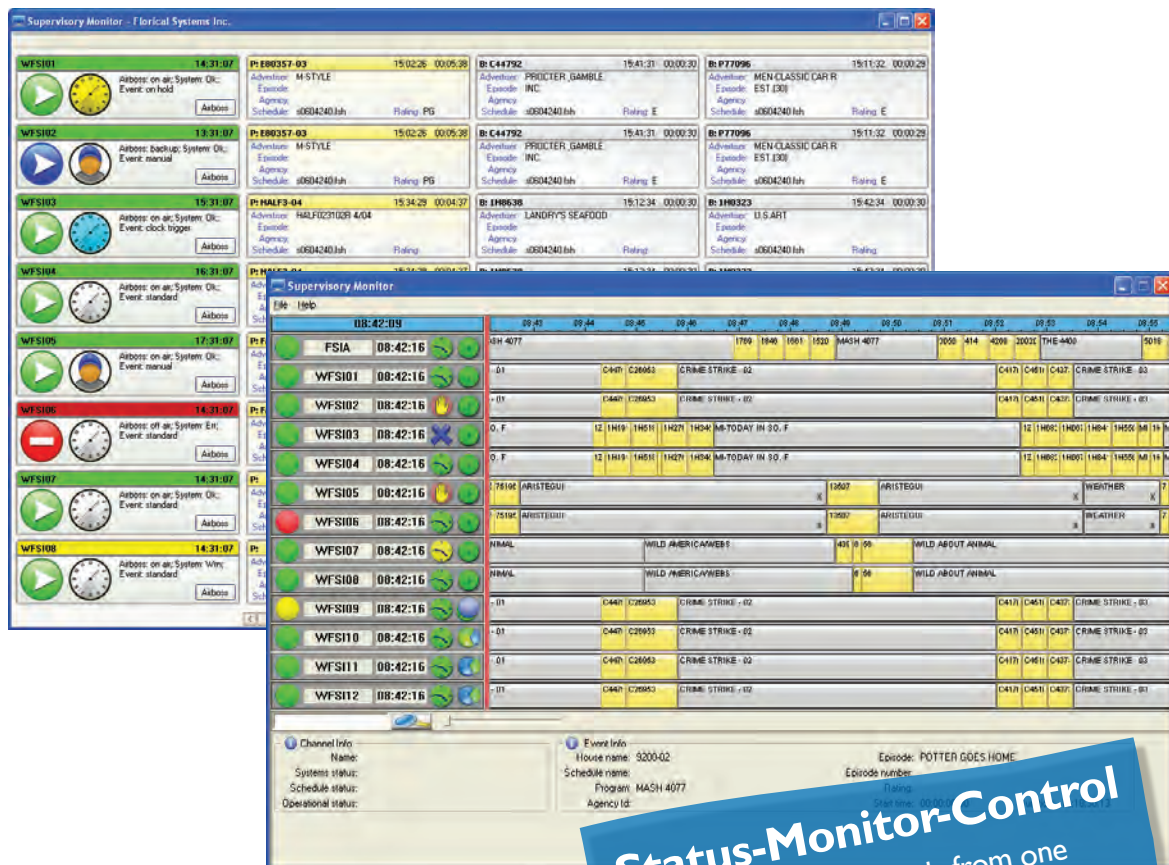


Manage

Supervisory Monitor makes it easier for operators to monitor and control multiple channels from a single workstation. Supervisory Monitor provides a status of each channel and a horizontal time line with the ability to scroll to view events farther in the future. Each event and channel can be selected to show more detailed information.

With S.M.A.R.T. Central's Remote AirBoss option, an operator can click on a channel to access the on-air schedule to edit the schedule or control the channel without KVM switches, remote-desktop applications or moving to a different workstation!



Status-Monitor-Control
 Monitor multiple channels from one screen. Scroll to view events in the future. Drill down for detailed event data.

- Scroll to see future events.
- Monitor multiple channels on one screen.
- Display status errors for monitored channels.
- Moving time line display or event based display.
- Shows local time for channels in different time zones.
- Detailed information can be shown for each channel and event.

