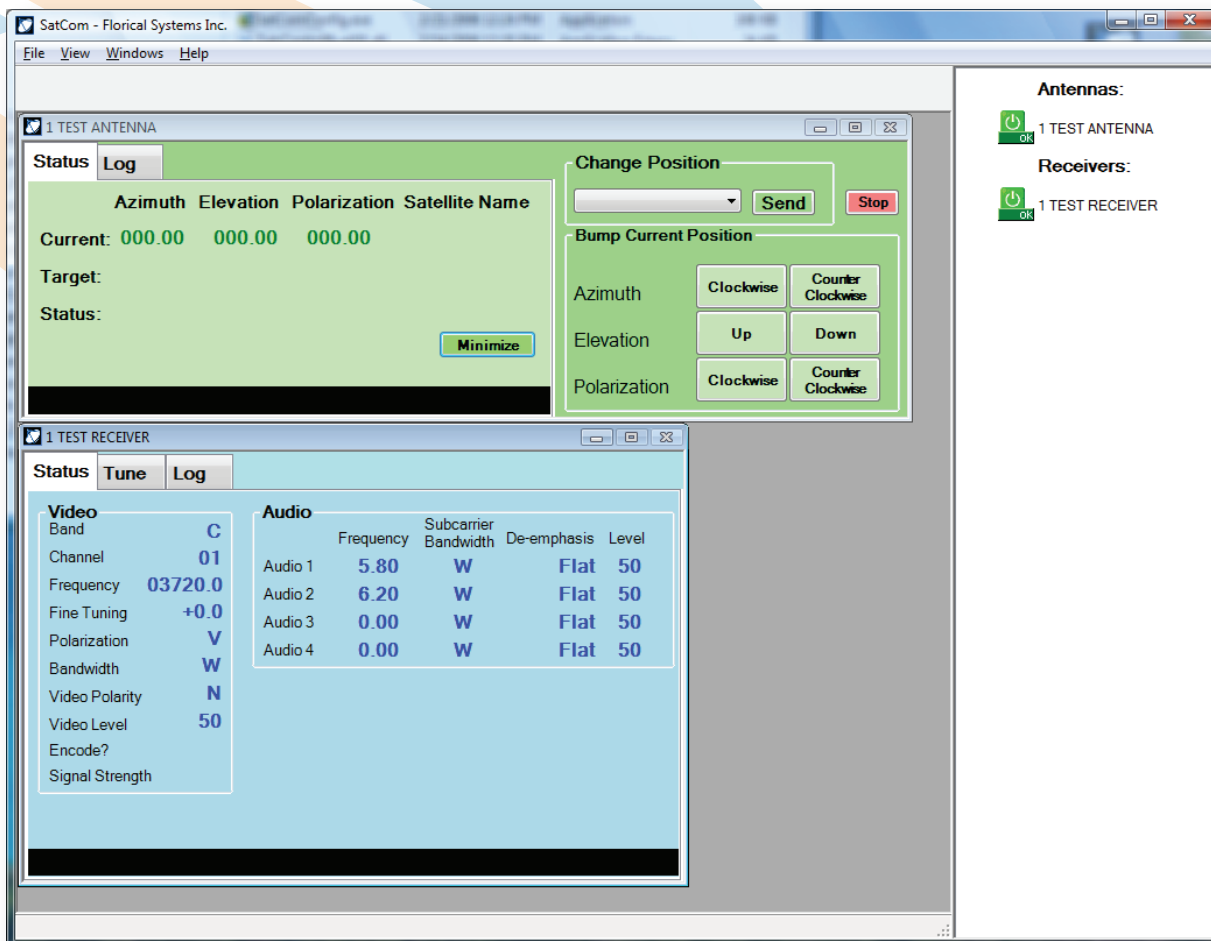


SatCom provides a consolidated location to remotely select, control, and status any configured device such as satellite antenna controllers, satellite receivers, and routing switchers. The intuitive user interface clearly displays the status of all attached devices and allows users to "bump" the antenna or tune the receivers with only a few key strokes.



- Interface with ShowTimer for automated control
- User friendly interface
- Position dishes, tune receivers and route feeds
- Clearly view status of multiple devices
- Logs changes in receiver settings and antenna positions